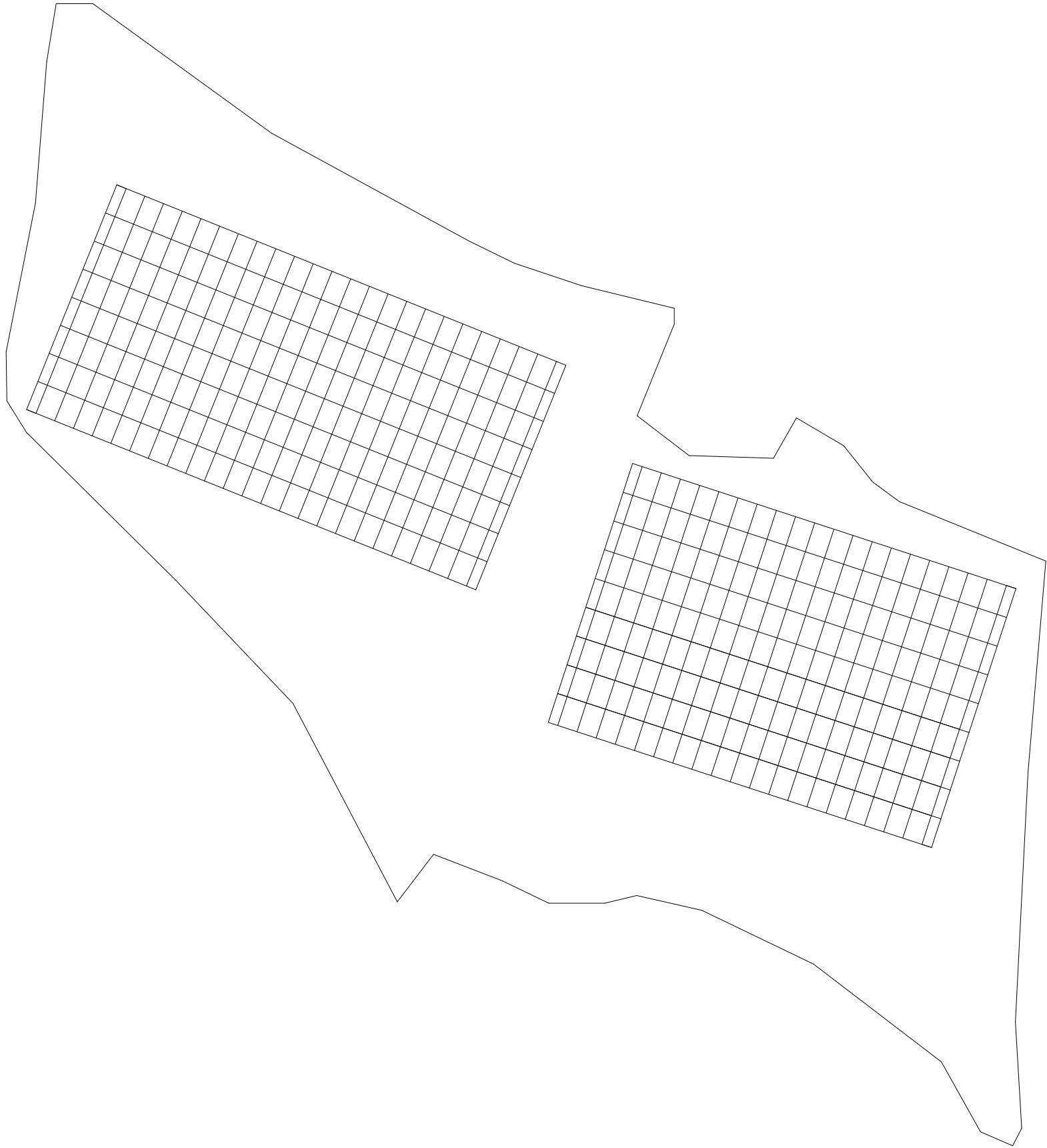


令和元年度
ハイブリッド産地育成推進事業

ブドウ栽培施設工事

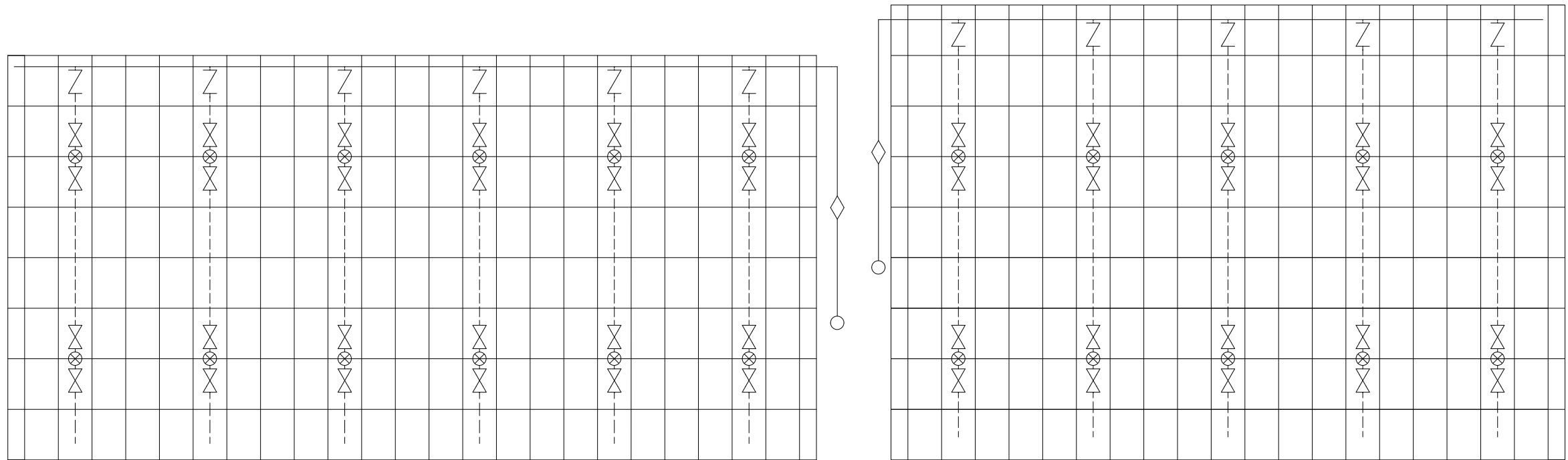
吉備中央町

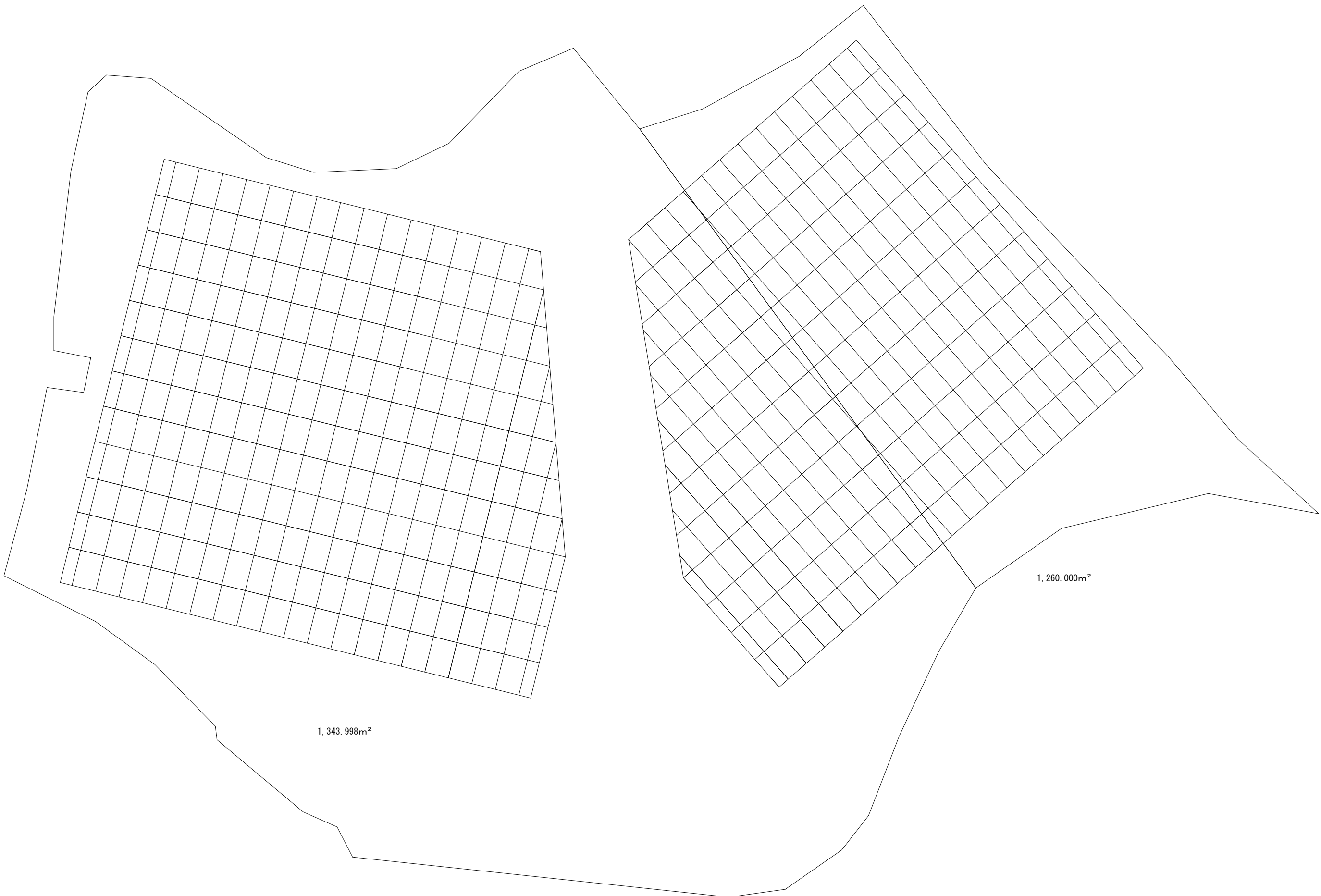


H31-1号①

灌水設備配管図

H31-1号②



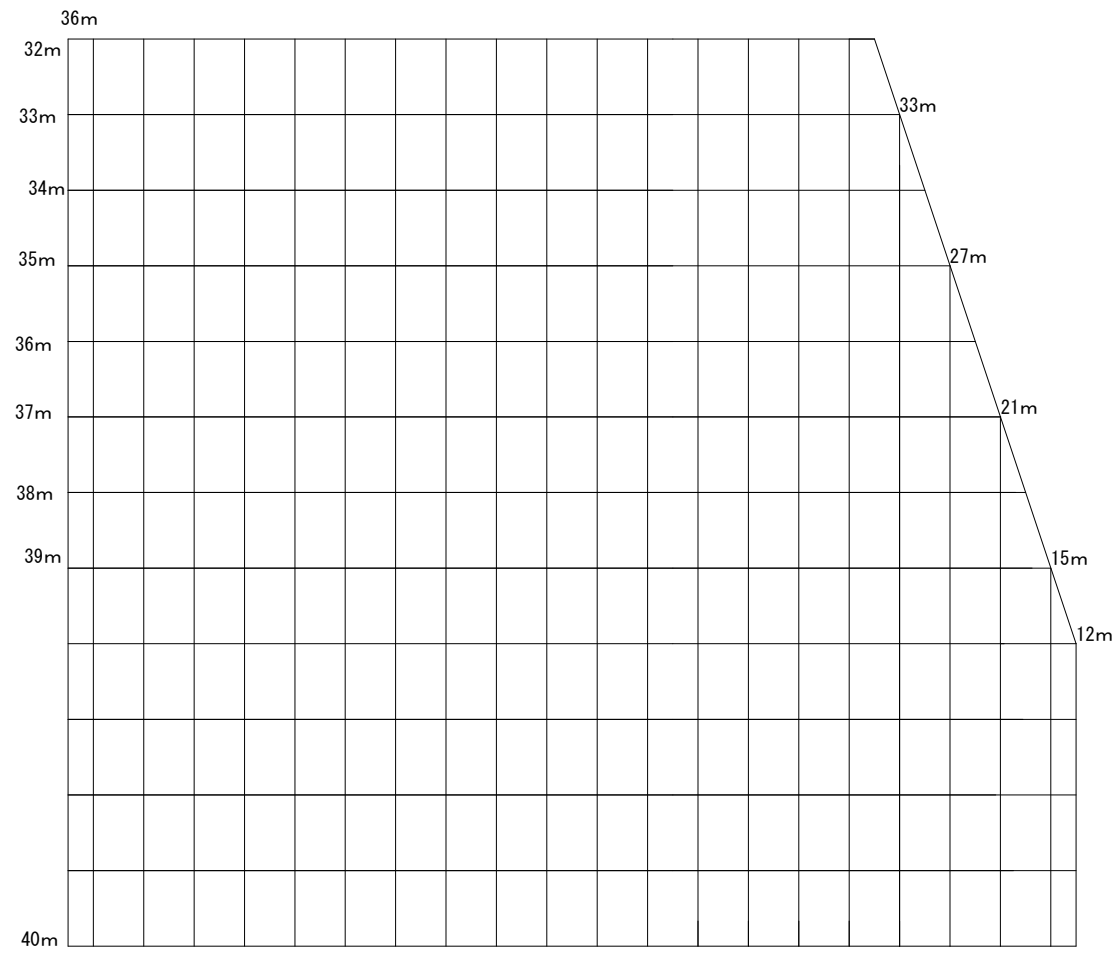


1,343.998m²

1,260.000m²

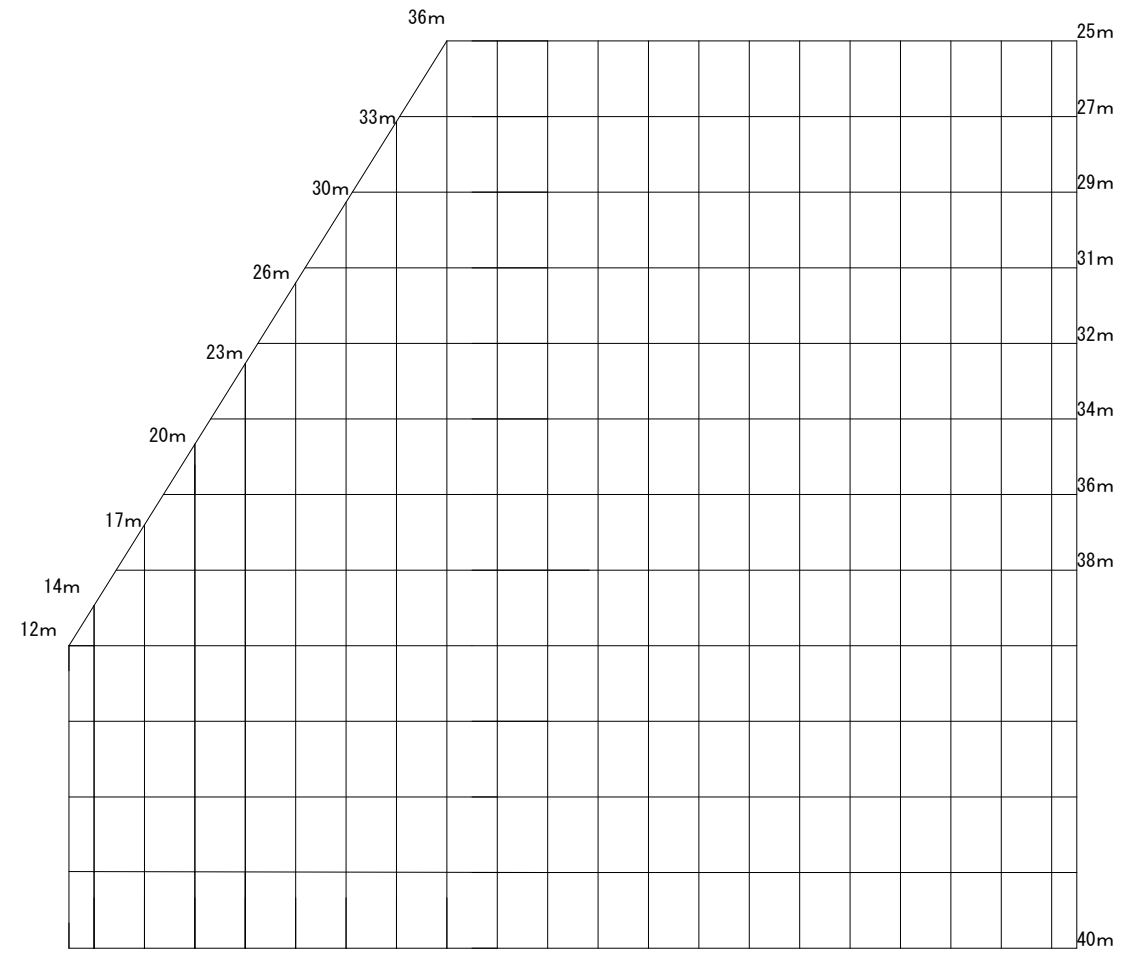
H31-2号①

1,344m² 145m



H31-2号②

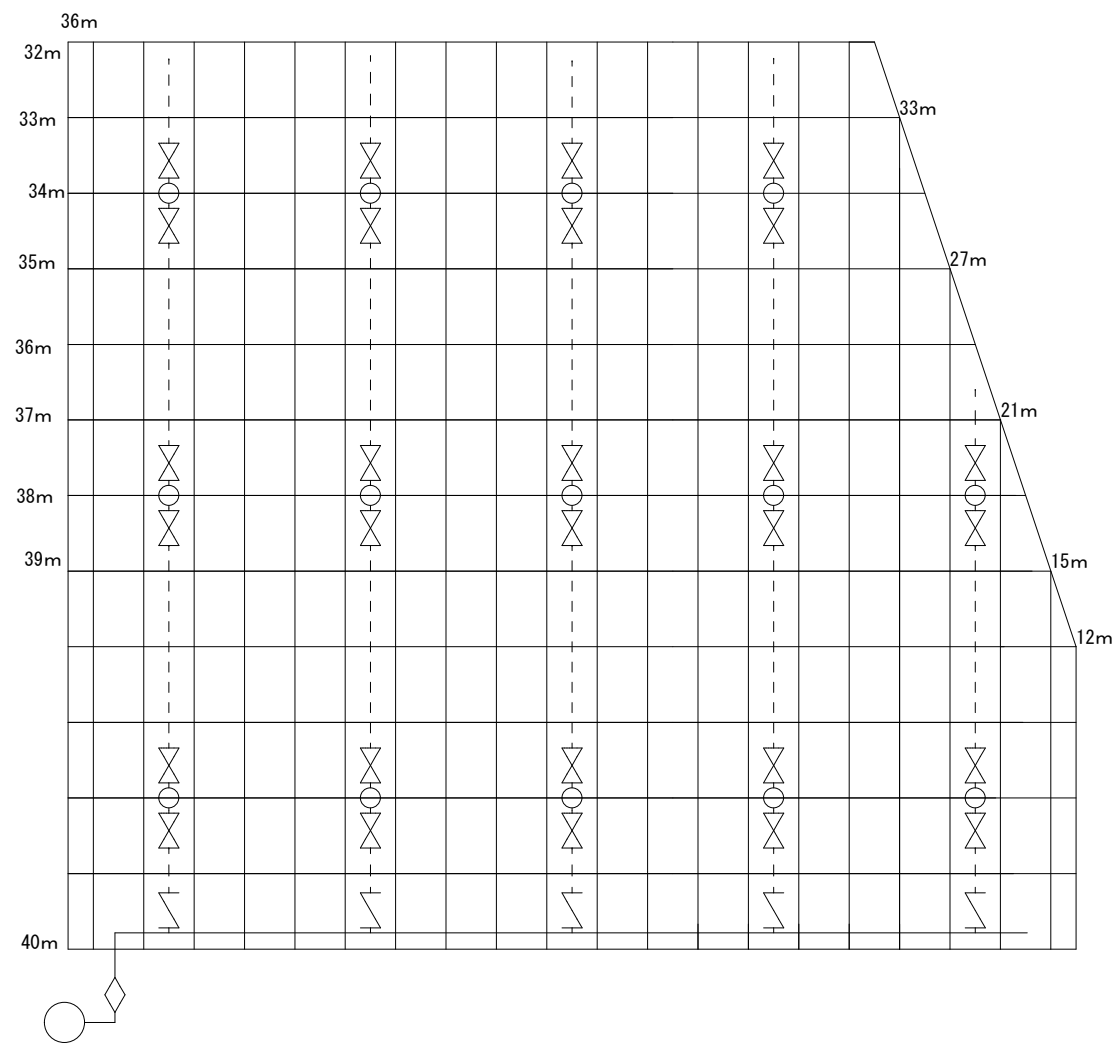
1,260m² 141m



灌水設備配管図

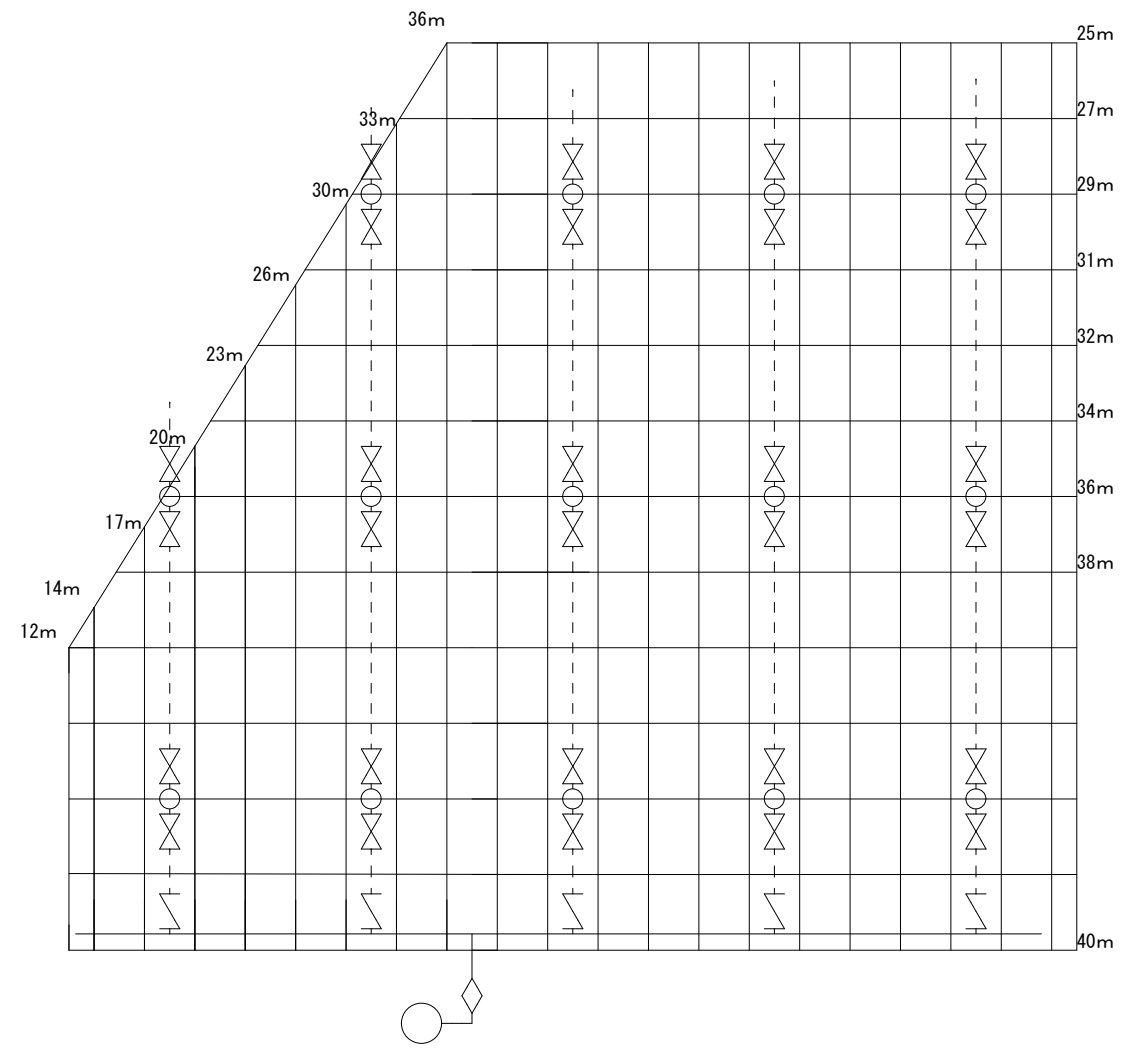
H31-2号①

1,344m² 145m



H31-2号②

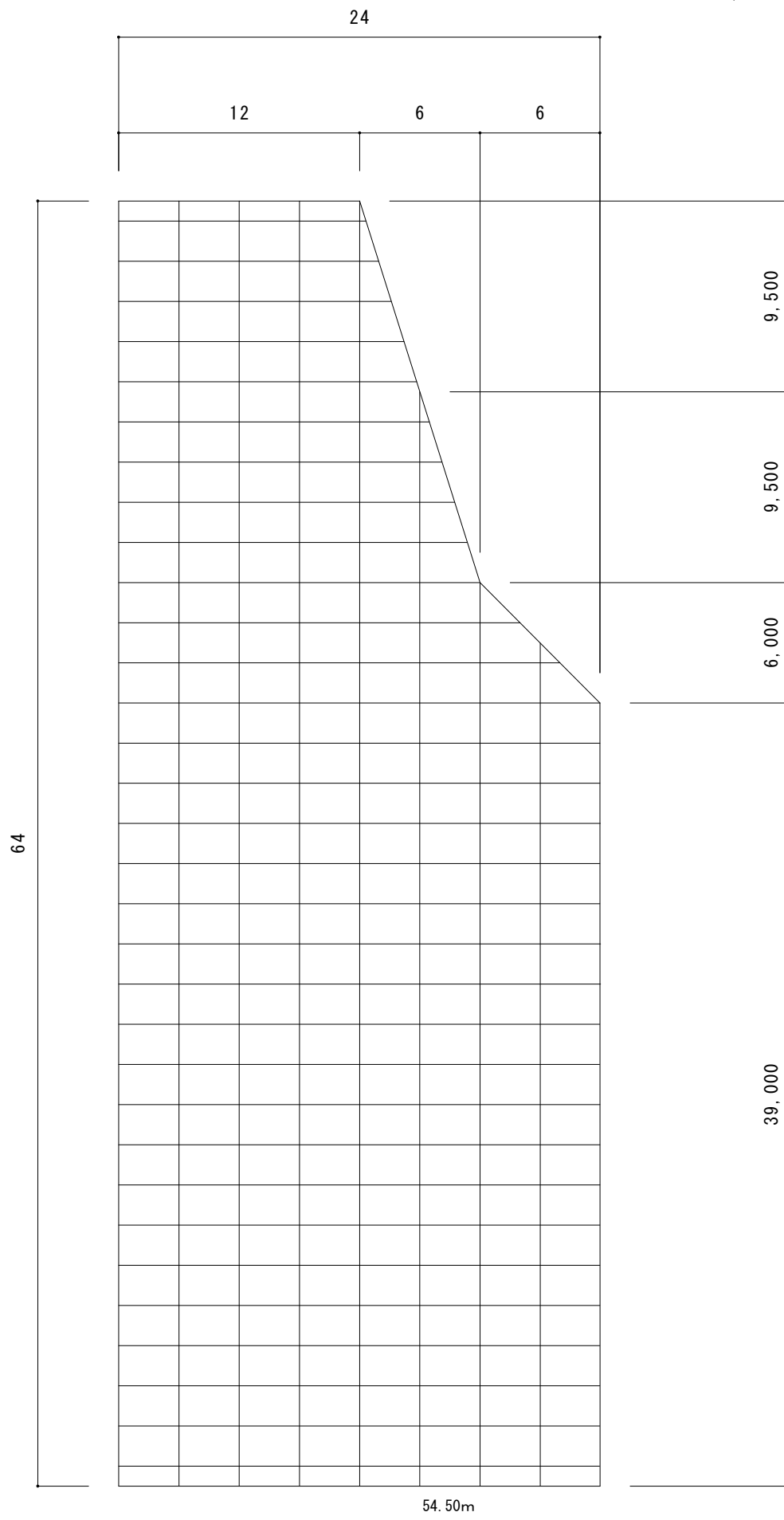
1,260m² 141m





H31-3号

1,345.91m²



灌水設備配管図

H31-3号

1,345.91m²

